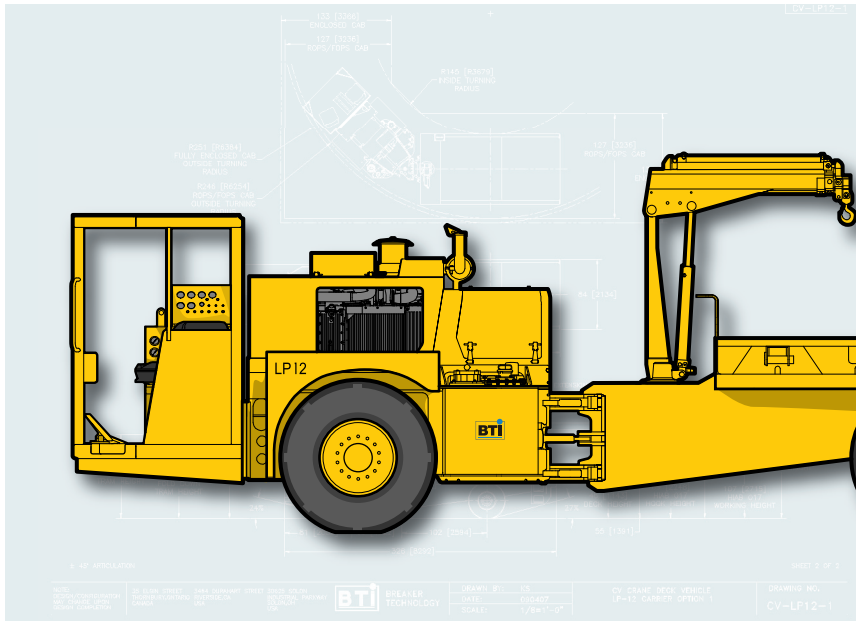


CV SERIES - LP12

Crane Utility Vehicle



AT A GLANCE

Weights & Dimensions:

Operating Weight 26,500 lb (12,045 kg)	Overall Trimming Length 27'-2" (8.3 m)	Overall Width 7'-0" (2.13 m)
Tramming Height 8'-4" (2.54 m)	Carrier Articulation +/- 45°	Inside Turning Radius 12'-1" (3.68 m)
Outside Turning Radius 20'-11" (6.38 m)		

Note: weights & dimensions are nominal and vary depending on final engine, operator's enclosure & option configuration.

Engine Configurations:

- Deutz BF4M1013C
122 hp (91 kW) @ 2300 rpm
MSHA/Tier II
- ▲ Caterpillar C4.4 ACERT
127 hp (95 kW) @ 2200 rpm
Tier III

● Standard ▲ Optional

Crane Configurations:

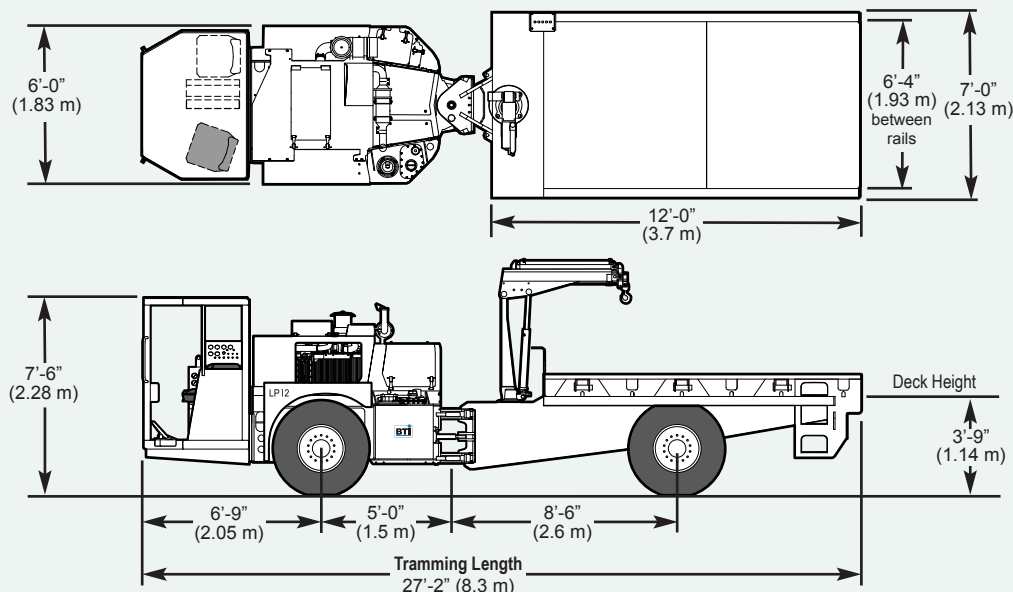
HIAB 017T-2, Two hydraulic stages, one manual extension 850 lb (385 kg) at 13.8 ft (4.2 m) 2,910 lb (1,320 kg) at 4.1 ft (1.25 m)	HIAB 033T-2, Two hydraulic stages, two manual extensions 1,166 lb (530 kg) at 19.7 ft (6.0 m) 5,434 lb (2,470 kg) at 4.6 ft (1.4 m)
--	--

FEATURES & BENEFITS

- High speed / high mobility underground crane utility vehicle.
- +/-45° vehicle articulation for tight turning radius.
- Separate torque converter / transmission package provides low profile engine shroud height for improved operator visibility.
- Close coupled engine/transverter provides a short turning radius and excellent weight distribution.
- Operator's compartment provides comfort and visibility for operator and passenger.

Deck:

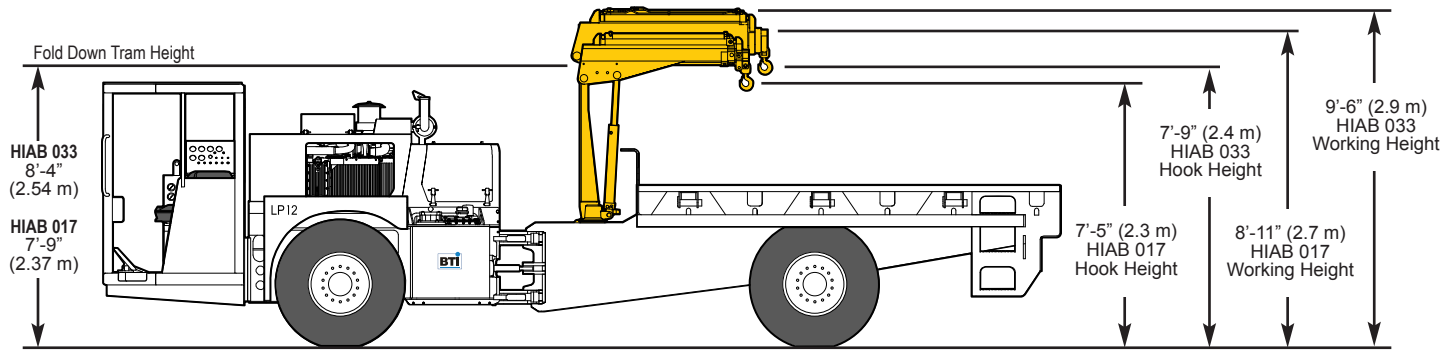
- 7 ft wide x 12 ft long (2.13 m x 3.66 m)
- 6" high kick rail
- Winch tie-downs to secure loads



OPTIONS

- Protective operator structure
- Seating configurations
- Air intake system
- Exhaust system
- Hydraulic filling system
- Tires
- Fire suppression system
- Wheel chocks
- Tailgate configurations
- Deck lighting
- Storage boxes

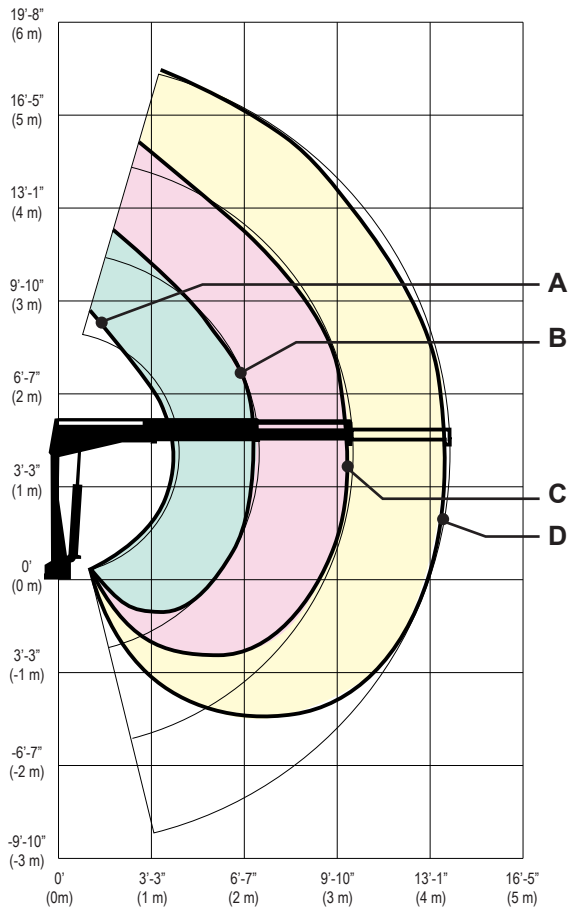
CV SERIES (LP12) CRANE DIMENSIONS



HIAB 017T-2 LOAD CAPACITY AND CRANE ROTATION

Load Diagram

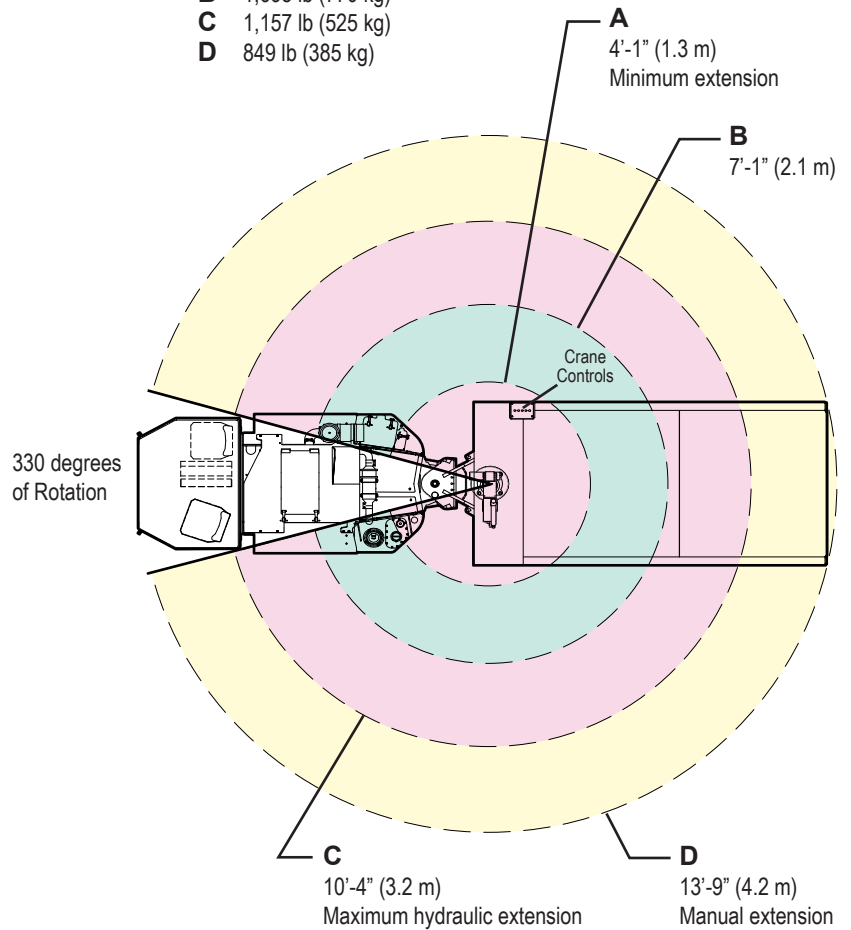
To the left of the curve, the indicated loads can be handled with any loader function provided that the positions of the booms are optimized from a force point of view.



Crane Rotation

Crane rotation of 330 degrees with the following capacities:

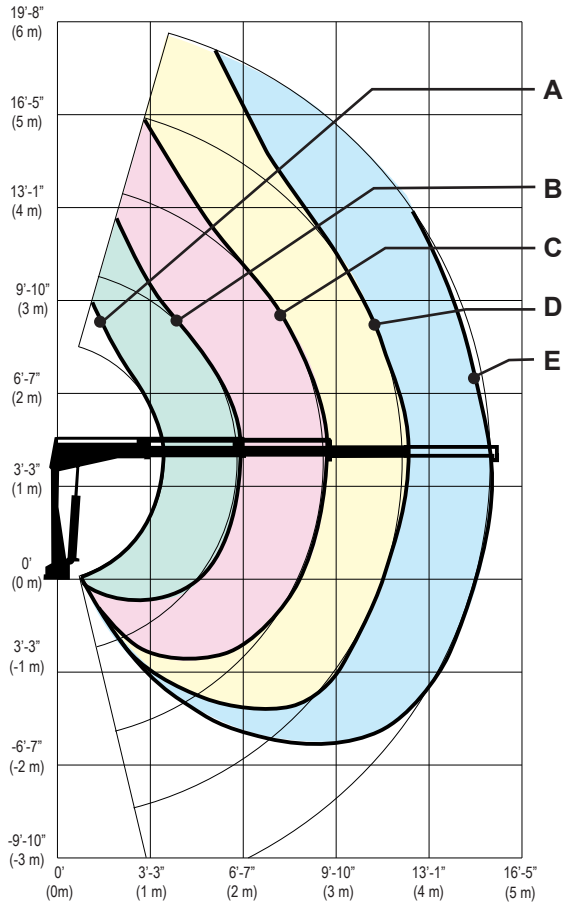
- A** 2,910 lb (1,320 kg)
- B** 1,698 lb (770 kg)
- C** 1,157 lb (525 kg)
- D** 849 lb (385 kg)



HIAB 033T-2 LOAD CAPACITY AND CRANE ROTATION

Load Diagram

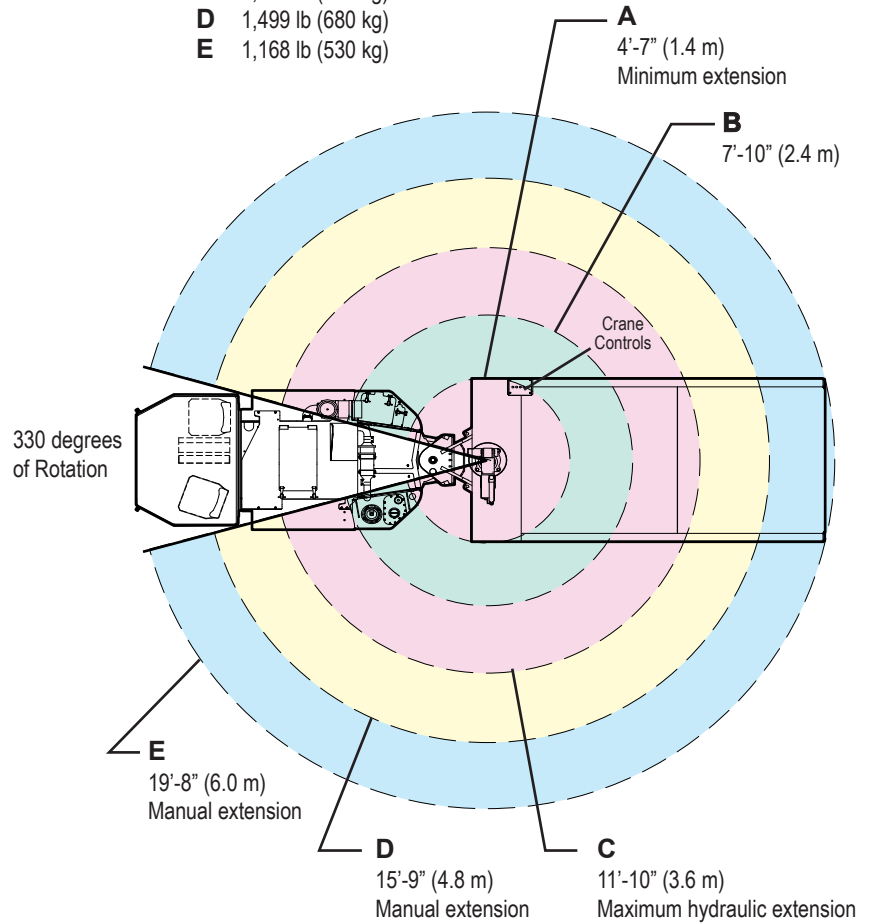
To the left of the curve, the indicated loads can be handled with any loader function provided that the positions of the booms are optimized from a force point of view.



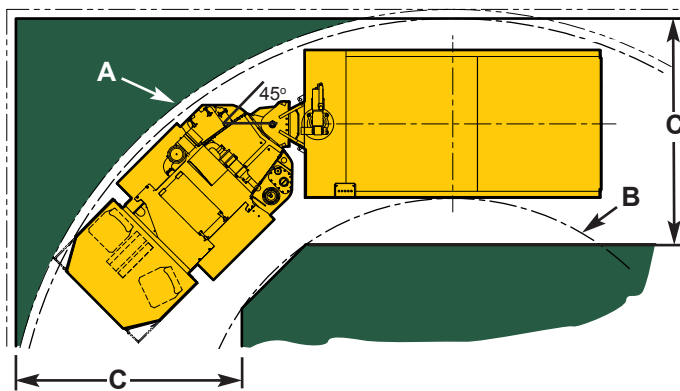
Crane Rotation

Crane rotation of 330 degrees with the following capacities:

- A** 5,445 lb (2,470 kg)
- B** 3,086 lb (1,400 kg)
- C** 2,050 lb (930 kg)
- D** 1,499 lb (680 kg)
- E** 1,168 lb (530 kg)



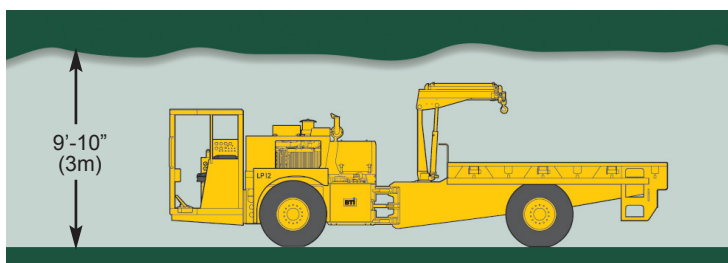
DRIVING SPECIFICATIONS



Turning Radius

Turning radius: +/- 45° articulation

		Fully Enclosed Cab	Open Air Canopy
A	Outside Turning Radius	20'-11" (6.38 m)	20'-6" (6.25 m)
B	Inside Turning Radius	12'-1" (3.68 m)	
C	Minimum Mine Tunnel Width	11'-1" (3.36 m)	10'-7" (3.23 m)

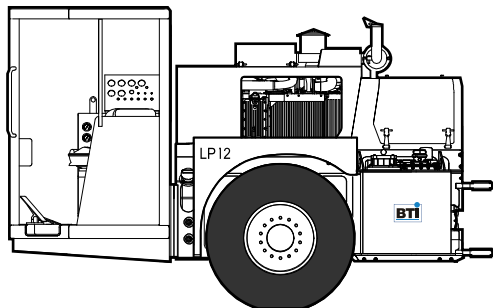


Recommended Drift Height

BTI recommends a minimum drift height with cab: 9'-10" (3 m)

POWERTRAIN GROUP OPTIONS

- Standard ▲ Optional



- **Engine:** Deutz BF4M1013C, four cylinder, turbocharged, intercooled diesel, MSHA Tier II, 122 hp (91 kW) @ 2300 rpm c/w fuel filter and water separator

Torque Converter: Clark T20000 series

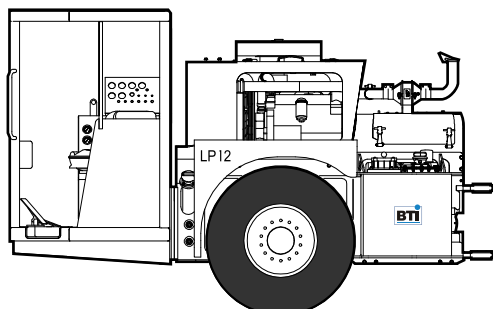
Transmission: Clark 20,000 series, long drop, remote mounted, electric shift
Three forward and three reverse speeds

Vehicle speeds with 12:00 x 20 tires @ 2200 rpm with standard axle ratio:
1st gear: 2.4 mph (3.9 kph) - 2nd gear: 6.2 mph (10.9 kph) - 3rd gear: 11.4 mph (18.3 kph)

Engine end axle: New Holland D65X no spin differential wet disk SAHR emergency brakes, wet disk HASR service brakes, complete with external walking beam, +/- 10 degrees oscillation

Boom end axle: New Holland D65X no spin differential wet disk SAHR emergency brakes, wet disk HASR service brakes

Drivelines: Mechanics 6C



- ▲ **Engine:** Caterpillar C4.4 ACERT electronic four cylinder, turbocharged, intercooled diesel, Tier III, 127 hp (95 kW) @ 2200 rpm c/w fuel filter and water separator.

Torque Converter: Clark T20000 series

Transmission: Clark 20,000 series, long drop, remote mounted, electric shift
Three forward and three reverse speeds

Vehicle speeds with 12:00 x 20 tires @ 2200 rpm with standard axle ratio:
1st gear: 2.4 mph (3.9 kph) - 2nd gear: 6.2 mph (10.9 kph) - 3rd gear: 11.4 mph (18.3 kph)

Engine end axle: New Holland D65X no spin differential wet disk SAHR emergency brakes, wet disk HASR service brakes, complete with external walking beam, +/- 10 degrees oscillation

Boom end axle: New Holland D65X no spin differential wet disk SAHR emergency brakes, wet disk HASR service brakes

Drivelines: Mechanics 6C

AIR INTAKE SYSTEM OPTIONS

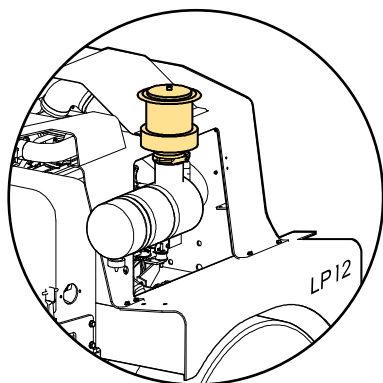
● Air Intake Filter

A dry element filter with safety element and replacement indicator.

▲ Air Intake Precleaner

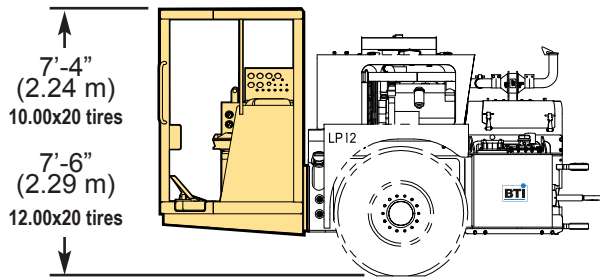
A dry element filter with safety element and replacement indicator, complete with a cyclone Pre-cleaner.

A pre-cleaner extends the life of your air filter by removing dirt and contaminants before they reach the filter and ejecting them automatically via the exhaust.



PROTECTIVE STRUCTURES OPTIONS

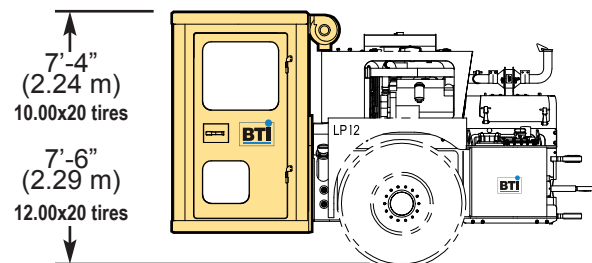
- Standard
- ▲ Optional



● Open Air Canopy – Uncertified

▲ ROPS/FOPS Canopy

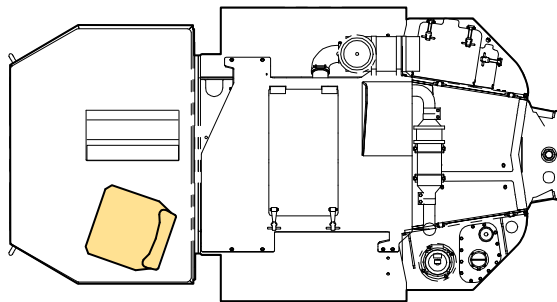
Open air canopy ROPS/FOPS certified



▲ ROPS/FOPS Cab

Full cab; covers operator, controls and passenger. Tested and certified ROPS/FOPS cab. Includes heavy-duty safety glass, wiper/washers, HVAC heat / air conditioning system, air pressurization system.

OPERATOR SEAT OPTIONS

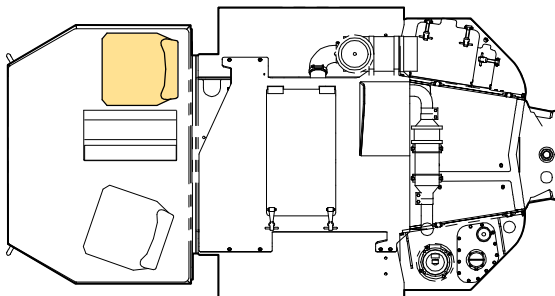


Operator Seat Options

- Suspension Seat, fixed
- ▲ Air Ride Seat, fixed

Mine duty operator seat options available in fixed suspension and fixed air ride variations.

PASSENGER SEAT OPTIONS



● No Passenger Seat

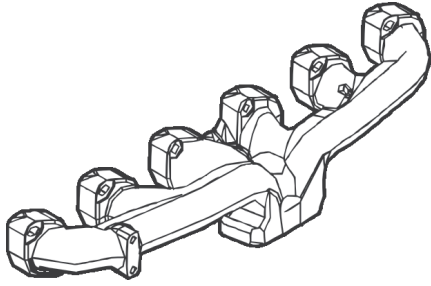
Passenger Seat Options

- ▲ Suspension Seat, fixed (facing front)
- ▲ Air Ride Seat, fixed (facing front)

Mine duty passenger seat option available in fixed suspension and fixed air ride variations.

EXHAUST SYSTEM OPTIONS

- Standard ▲ Optional



● Catalytic Exhaust

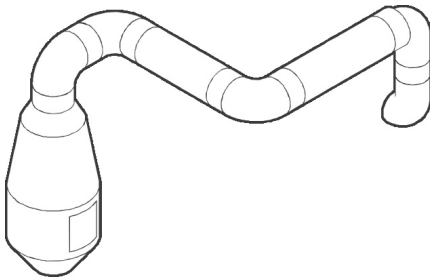
A catalytic exhaust, purifier/silencer. No exhaust blanket.

▲ Exhaust Manifold and Turbo Coating

Prevents fluids from igniting on hot engine and exhaust parts. High temperature performance: ideal for engine compartment components requiring long-term exposure to high temperatures.

Non-flammable. Protects personnel from burns.

Lowers ambient temperature; cooler engine compartment, less heat stress on operators and maintenance personnel.



▲ Exhaust System Wrap

Prevents fluids from igniting on exhaust parts. High temperature performance.

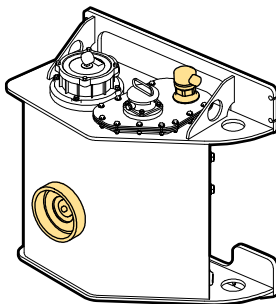
Non-flammable. Protects personnel from burns.

Lowers ambient temperature; cooler engine compartment, less heat stress on operators and maintenance personnel.

HYDRAULIC TANK OPTIONS

● Hydraulic Tank

30 gallon (114 liter) hydraulic tank, top fill, 4 psi pressurized cap.



▲ Hydraulic Tank with Fast Fill

30 gallon (114 liter) hydraulic tank complete with fast filling system. Designed for on-site fast fluid transfer.

TIRE OPTIONS

● Standard ▲ Optional

● Pneumatic Tires

12:00 x 20; 20 ply mine lug pneumatic tires

▲ Solid Tires

12:00 x 20 solid tires

▲ Foam Filled Tires

12:00 x 20 foam filled tires

▲ Solid Tires

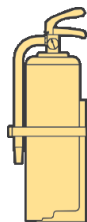
10:00 x 20 solid tires

FIRE SUPPRESSION SYSTEM OPTIONS

● No Fire Suppression System

▲ Fire Extinguisher

1 x 20 lb (9 kg) fire extinguisher.

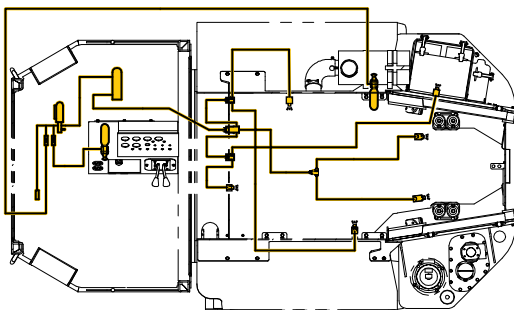


▲ Ansul Fire Suppression

Ansul fire suppression system, 6 nozzle, complete with 2 actuators. Complete with 20lb (9 kg) fire extinguisher.

▲ Ansul Fire Suppression with Detection

Ansul fire suppression system, 6 nozzle, complete with 2 actuators. Includes a check fire detection and activation system. Complete with 20lb (9 kg) fire extinguisher.

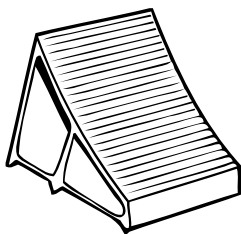


WHEEL CHOCK OPTIONS

● No Wheel Chocks

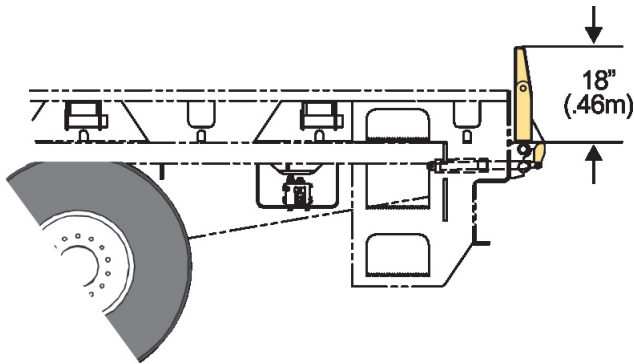
▲ Wheel Chocks - aluminum

Complete with holder



TAILGATE OPTIONS

- Standard
- ▲ Optional



● No Tailgate

▲ Fold Down Tailgate, Manual

Manual fold down tailgate

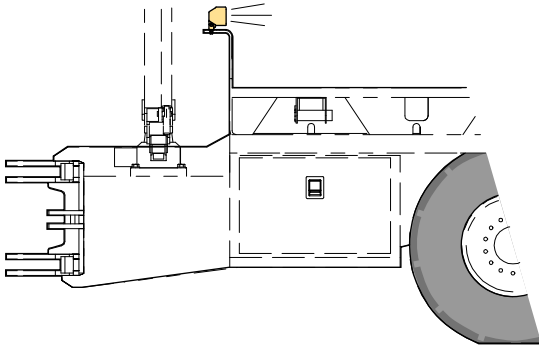
▲ Fold Down Tailgate, Hydraulically operated

DECK LIGHTING OPTIONS

● No Deck Lighting

▲ Qty 2 - 70W Deck Lights

Halogen lamp 24V 70 watt



STORAGE BOX OPTIONS

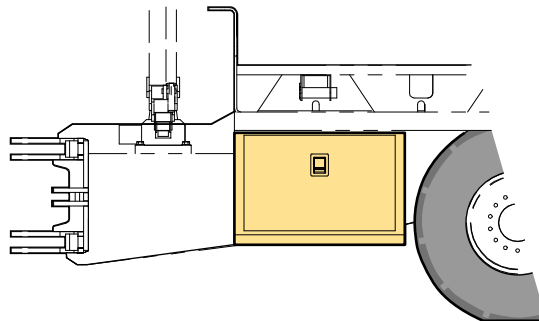
● No Storage Box

Storage Box Options

▲ Right Hand Box

▲ Left Hand Box

Steel, under bed storage box.
Height: 2' (610 mm) Width: 2' (610 mm)
Length: 3'-5/8" (930 mm)



10460-ENG-1009

All dimensions and specifications are subject to change without notice.